



Summary

Edith Garland Dupré Library's COVID-19 Response Survey





Thank You for Responding!

There were a total of 62 responses including students, faculty, staff, administrators, and alumni.





Satisfied!

Over 75% of respondents were "Satisfied" or "Very Satisfied" with the Library's immediate response to the COVID-19 pandemic.





Resources Utilized.

Over 80% of users who responded to the survey utilized our electronic databases and 29% used our Ask a Librarian chat service.



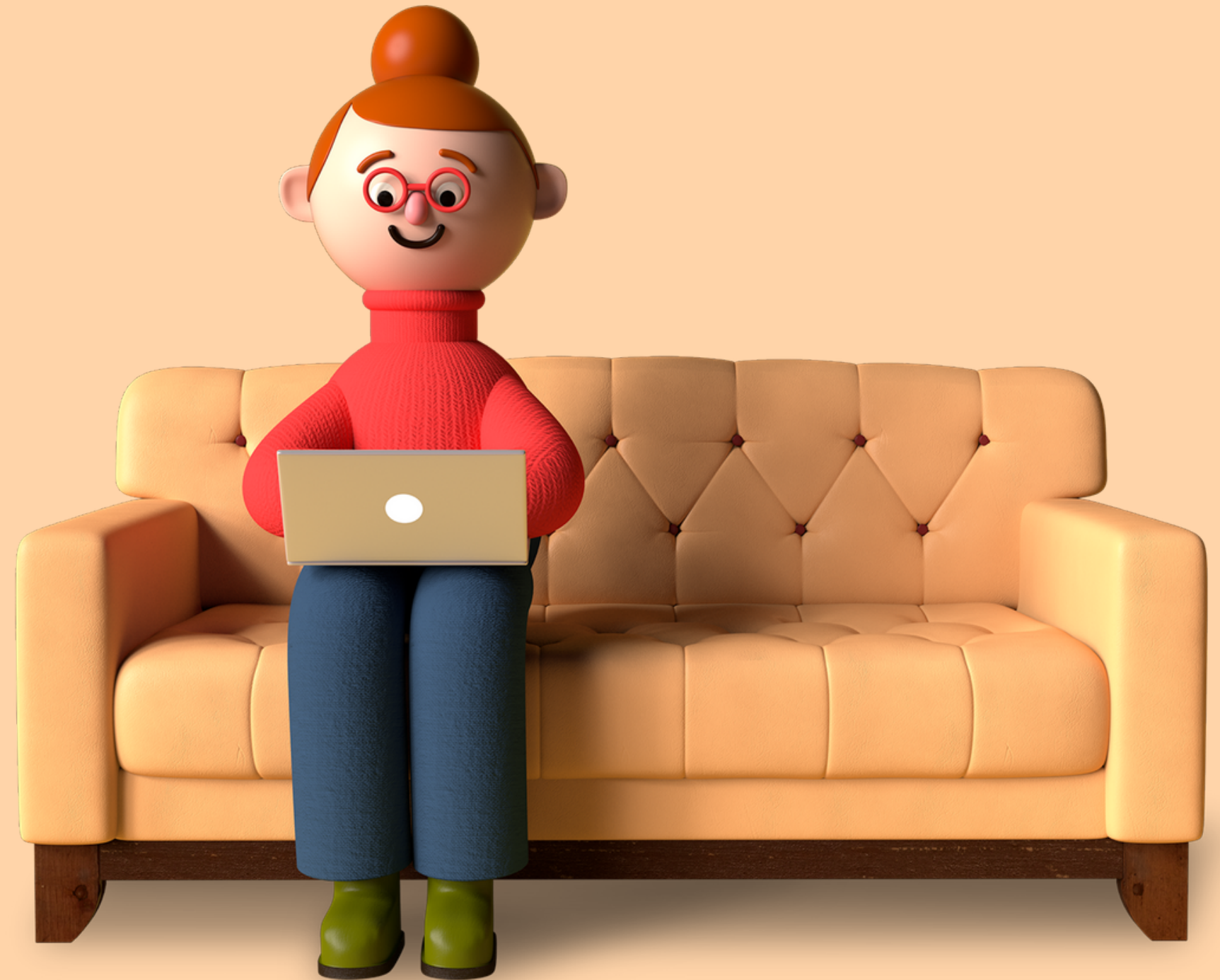


Curbside Pickup.

03 Requests for Library-Owned Materials

01 Request for Interlibrary Loan Materials

The Library's Circulation and Interlibrary Loan Departments have resumed normal operations.





Change it up.

Users have asked for the Library to reopen the study rooms, study carrels, provide hand sanitization stations, and extended hours for finals.

In response, we have added hand sanitization stations at the main entrance of the building and we extended library hours to 2 am during finals week. Unfortunately, the Library is unable to open the study rooms and carrels at this time.





We are open and ready to see you!

37 of the 62 users who responded to the survey has visited the library since we reopened in August.

Our spaces have been modified to meet social distancing standards and masks are required at all times in the building.





We are here to serve you!

Please continue to provide feedback and suggestions that can enhance your library experience!





Hang in there, Ragin' Cajuns!

Stay strong and stay safe!

Mask up!

The staff at Edith Garland Dupré Library is here to support you!

